

# Fish Lake 2014 Data Summary

## Fish Lake Snapshot

Years Monitored: 10  
 Total # of Events: 42  
 2014 Events: 4  
 Total Hours Monitored: 90.3

## Observations

### Wildlife Observed:

- Ducks
- Eagle
- Grebes
- Kingfisher
- Loons
- Scoters
- Swans with cygnets
- Tern
- Widgeons

### Water Level:

Medium to high

### Water Color:

Yellow/light tan  
 Light green

### Algae:

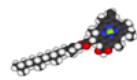
None

### Aquatic Plants:

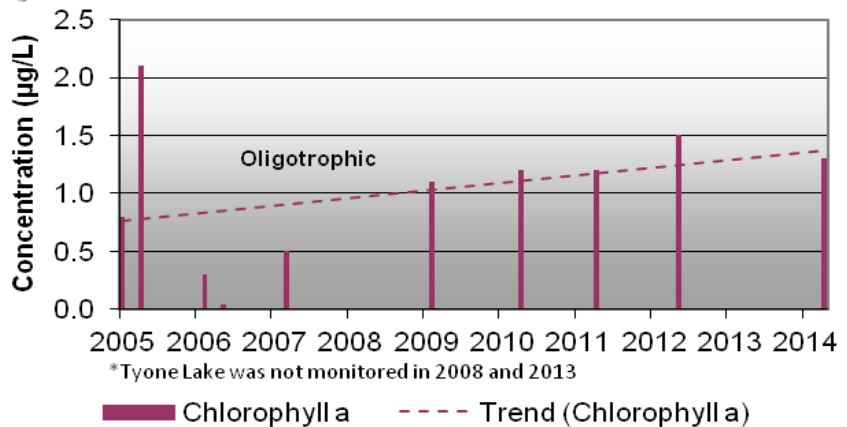
None to sparse; floating lily pads; 2% to 5% coverage.

### Additional Comments:

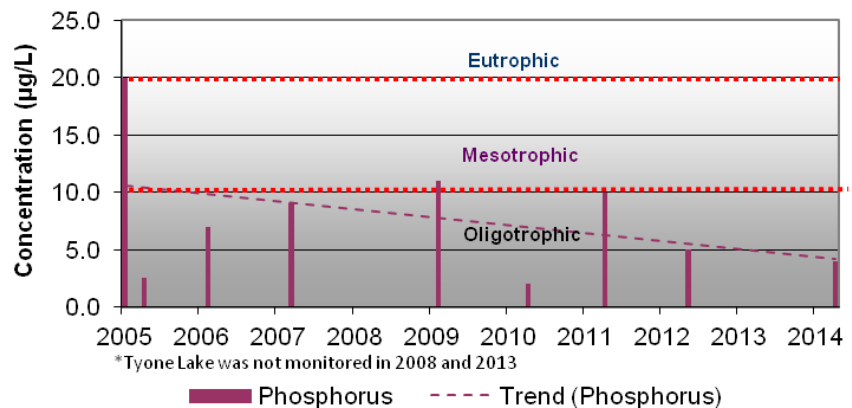
Water level raised due to consecutive days of rain.



Tyone Lake • Chlorophyll a 2005-2014



Tyone Lake • Phosphorus 2005-2014



## Fish Lake Profile Measurements

Fish		Depth (m)	Temperature (oC)	Conductivity (mS/cm)	Dissolved Oxygen (mg/L)	pH (SU)	Secchi Depth mean (m)
Date	9/14/2014	0.0	12.46	0.320	9.79	7.85	3.33
		1.0	12.43	0.320	9.58	8.12	
Site Depth (m)	16.20	2.0	12.34	0.322	9.49	8.17	
		3.0	12.38	0.321	9.51	8.19	
Phosphorus (µg/L)	6.0	4.0	12.24	0.324	9.15	8.15	
		5.0	11.97	0.328	8.76	8.08	
Chlorophyll a (µg/L)	1.3	6.0	9.77	0.397	2.43	7.90	
		7.0	6.98	0.429	0.32	7.79	
		8.0	4.94	0.457	0.29	7.72	
		9.0	4.24	0.479	0.28	7.68	
		10.0	3.75	0.508	0.25	7.64	
		13.5	3.39	0.606	0.26	7.63	
Date	8/19/2014	0.0	17.44	0.314	9.35	8.51	3.73
		1.0	16.55	0.309	9.55	8.55	
Site Depth (m)	16.00	2.0	16.33	0.310	9.53	8.55	
		3.0	15.84	0.310	9.41	8.54	
Phosphorus (µg/L)	17.0	4.0	15.40	0.313	9.39	8.49	
		5.0	12.71	0.370	7.18	8.01	
Chlorophyll a (µg/L)	0.9	6.0	8.45	0.404	2.31	7.87	
		7.0	5.72	0.429	1.05	7.85	
		8.0	4.50	0.453	0.27	7.89	
		9.0	4.10	0.470	0.22	7.86	
		10.0	3.85	0.485	0.17	7.86	
		15.0	3.53	0.631	0.18	7.95	
		16.0	3.56	0.640	0.15	8.03	
Date	6/15/2014	0.0	14.68	0.302	10.36	8.07	3.48
		1.0	14.65	0.302	10.07	8.24	
Site Depth (m)	16.30	2.0	14.61	0.303	9.93	8.30	
		3.0	14.36	0.303	9.71	8.28	
Phosphorus (µg/L)	5.0	4.0	12.63	0.309	9.90	8.19	
		5.0	8.12	0.355	8.38	7.95	
Chlorophyll a (µg/L)	1.4	6.0	4.80	0.389	1.04	7.75	
		7.0	3.91	0.411	0.19	7.64	
		8.0	3.55	0.430	0.16	7.59	
		9.0	3.43	0.452	0.12	7.56	
		10.0	3.31	0.484	0.12	7.55	
		15.0	3.39	0.622	0.09	7.60	
		16.0	3.08	0.645	0.12	7.65	

Highlighted data does not meet Alaska Water Quality Standards (WQS)



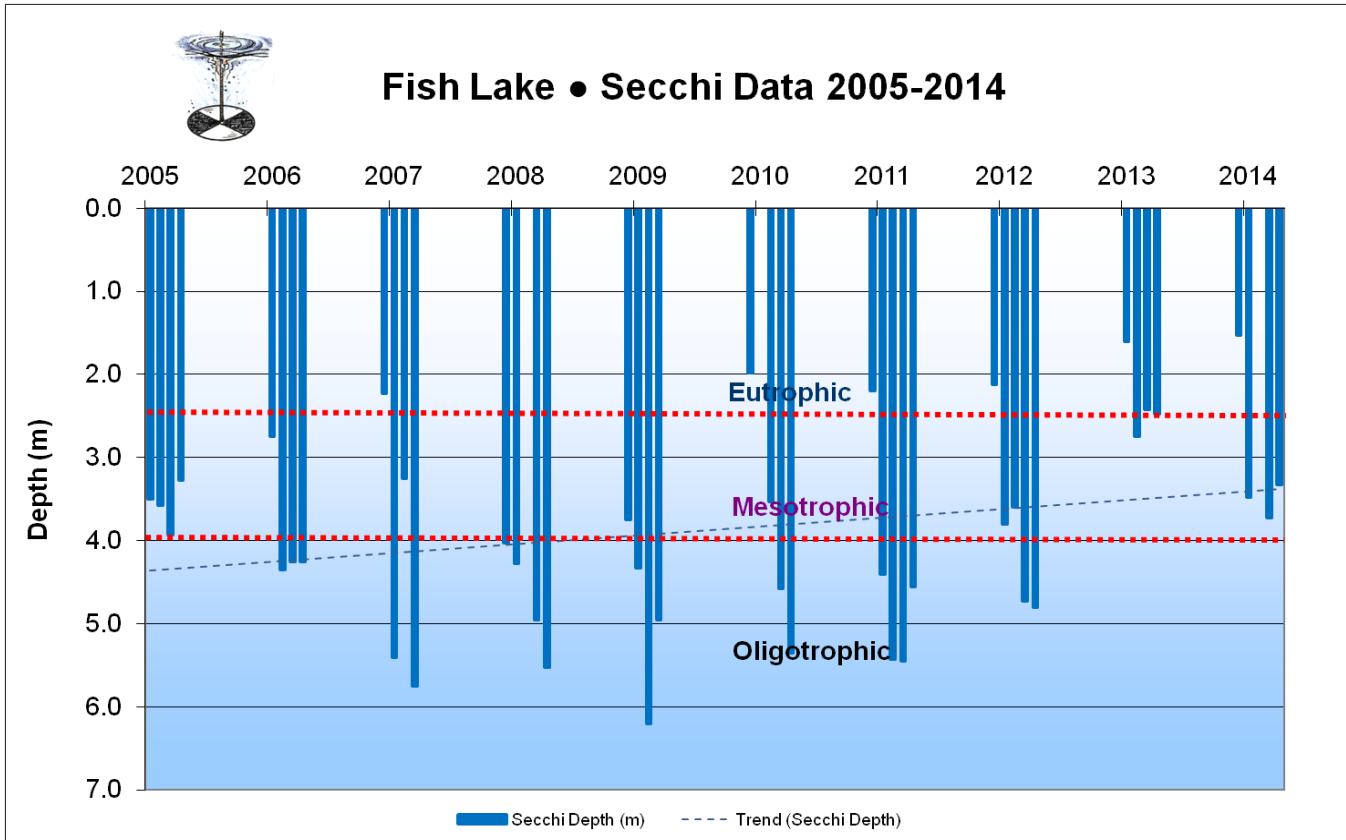
Swans with cygnets

# Fish Lake Profile Measurements

Fish		Depth (m)	Temperature (oC)	Conductivity (mS/cm)	Dissolved Oxygen (mg/L)	pH (SU)	Secchi Depth mean (m)	
Date	5/18/2014	0.0	12.90	0.301	11.40	8.25	1.53	
		1.0	12.90	0.301	11.60	8.27		
Site Depth (m)	15.60	2.0	12.85	0.300	11.55	8.26		
		3.0	11.04	0.304	12.00	8.18		
Phosphorus (µg/L)	12.0	4.0	7.72	0.322	10.57	7.92		
		5.0	4.70	0.313	5.80	7.58		
Chlorophyll a (µg/L)	5.7	6.0	3.91	0.393	0.78	7.49		
		7.0	3.58	0.412	0.15	7.49		
		8.0	3.51	0.425	0.10	7.49		
		9.0	3.36	0.443	0.10	7.50		
		10.0	3.24	0.515	0.08	7.49		
		15.0	3.60	0.629	0.07	7.69		
		15.5	3.61	0.688	0.04	7.75		
<b>ChIA</b>	<b>TP</b>	<b>Depth</b>	<b>T°</b>	<b>Cond</b>	<b>DO</b>	<b>pH</b>	<b>Secchi</b>	
5.7	17.0	16.30	17.44	0.688	12.00	8.55	3.73	Max
0.9	5.0		3.08	0.300	0.04	7.49	1.53	Min
1.3	9.0		6.98	0.393	2.31	7.89	3.40	Med
2.3	10.0		8.36	0.410	4.77	7.93	3.01	Ave
2.3	5.6		4.88	0.113	4.77	0.32	1.01	StDev

Highlighted data does not meet Alaska Water Quality Standards (WQS)

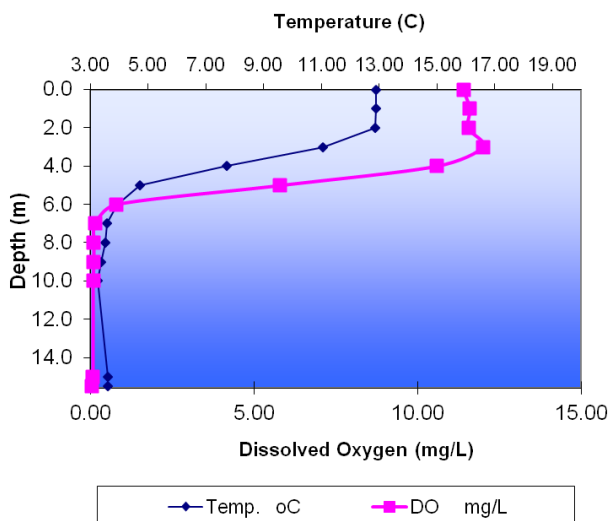
The Alaska Water Quality Standards do not apply absolutely to lakes without taking multiple factors into account. For more information on WQS, please see <http://www.dec.state.ak.us/water/wqsar/wqs/>.



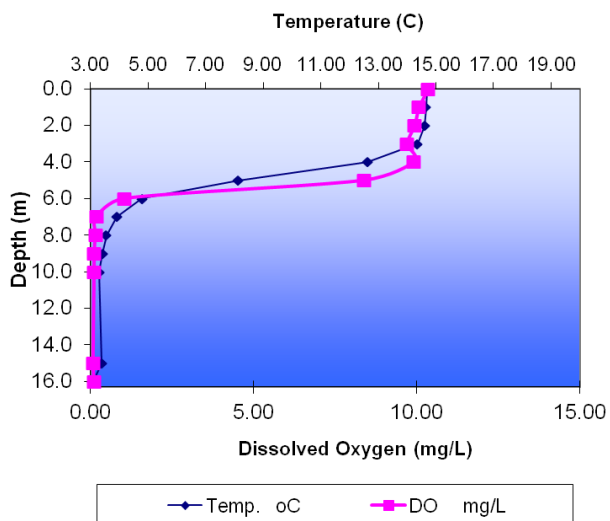
# Matanuska-Susitna Borough Volunteer Lake Monitoring Program



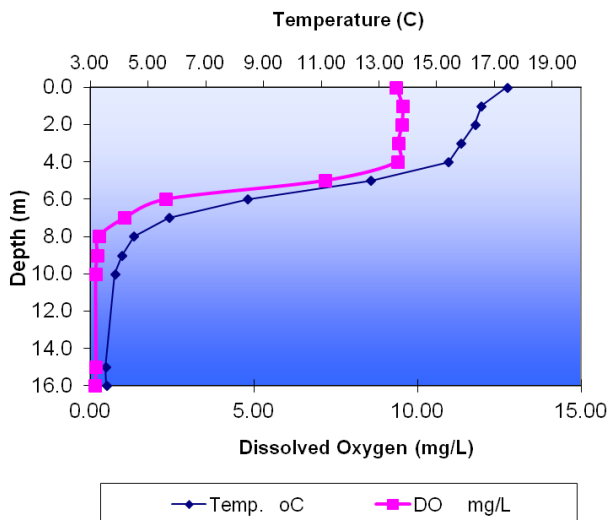
**Temperature and Dissolved Oxygen Profile  
Fish Lake -- May 2014**



**Temperature and Dissolved Oxygen Profile  
Fish Lake -- June 2014**



**Temperature and Dissolved Oxygen Profile  
Fish Lake -- August 2014**



**Temperature and Dissolved Oxygen Profile  
Fish Lake -- September 2014**

