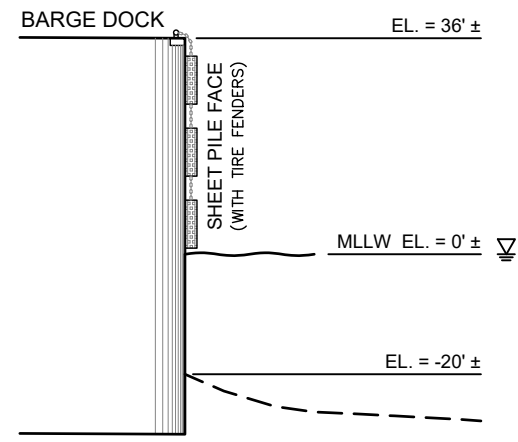
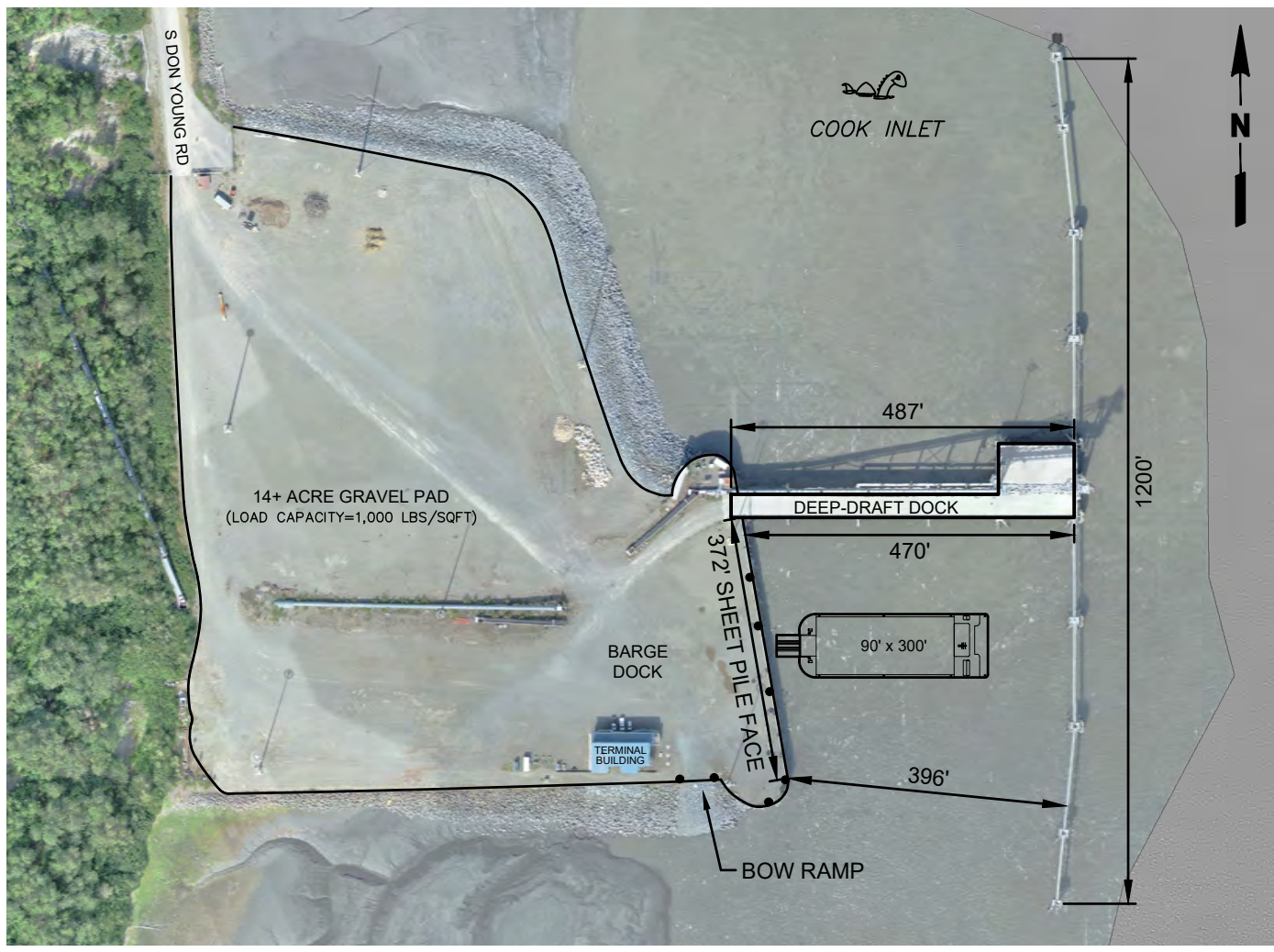


**DEEP DRAFT DOCK ELEVATION**  
-NTS-



**BARGE DOCK ELEVATION**  
-NTS-



 **MATANUSKA-SUSITNA BOROUGH**  
PUBLIC WORKS DEPARTMENT

**PORT MACKENZIE**  
**BARGE DOCK AND DEEP-DRAFT DOCK**  
**SPECIFICATIONS**

28000 S DON YOUNG ROAD  
WASILLA, ALASKA  
(907) 861-7799

FEBRUARY 2023