



Matanuska-Susitna Borough Special Land Use Districts (INSET)

Residential Land Use District

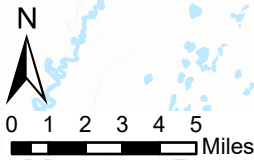
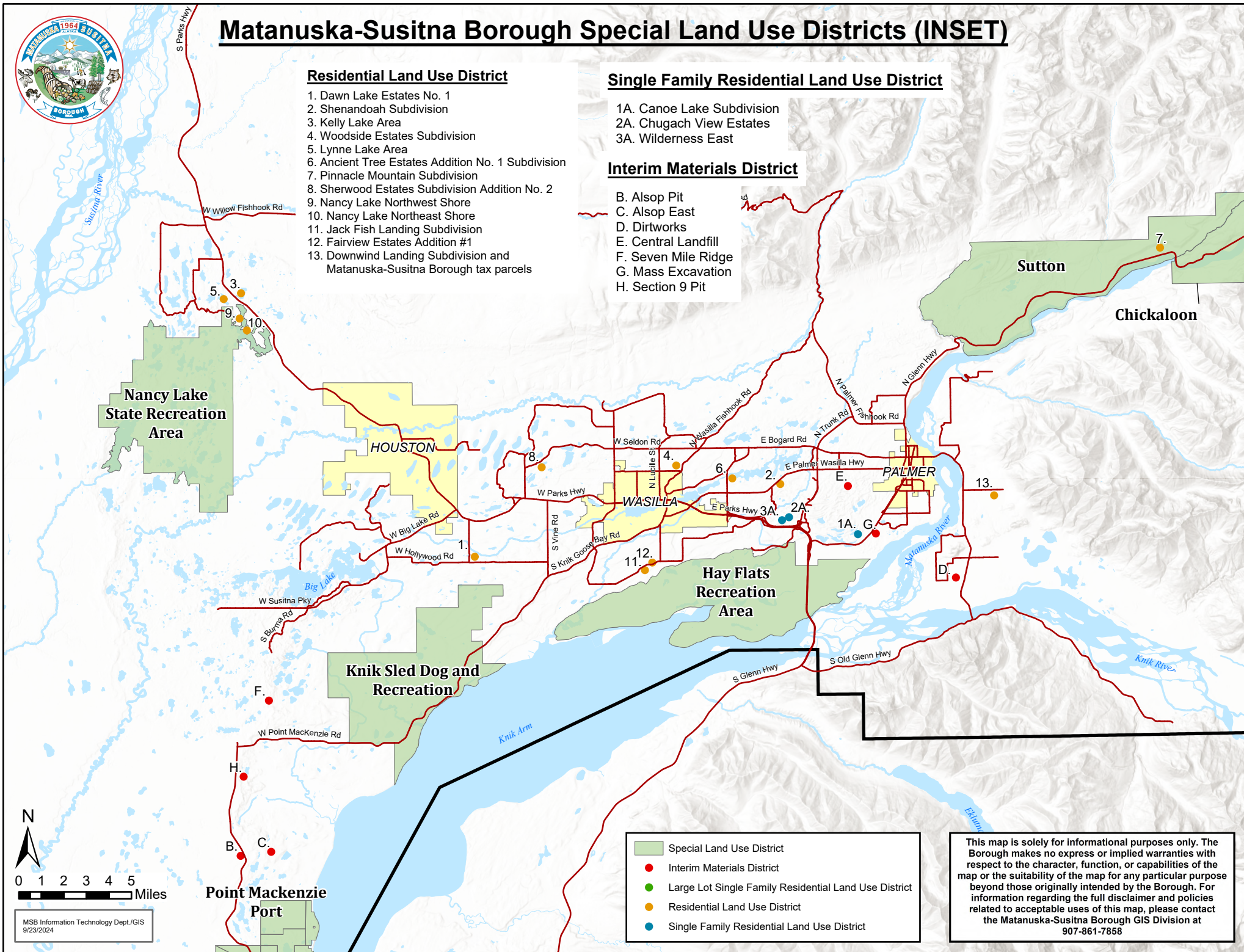
1. Dawn Lake Estates No. 1
2. Shenandoah Subdivision
3. Kelly Lake Area
4. Woodside Estates Subdivision
5. Lynne Lake Area
6. Ancient Tree Estates Addition No. 1 Subdivision
7. Pinnacle Mountain Subdivision
8. Sherwood Estates Subdivision Addition No. 2
9. Nancy Lake Northwest Shore
10. Nancy Lake Northeast Shore
11. Jack Fish Landing Subdivision
12. Fairview Estates Addition #1
13. Downwind Landing Subdivision and Matanuska-Susitna Borough tax parcels

Single Family Residential Land Use District

- 1A. Canoe Lake Subdivision
- 2A. Chugach View Estates
- 3A. Wilderness East

Interim Materials District

- B. Alsop Pit
- C. Alsop East
- D. Dirtworks
- E. Central Landfill
- F. Seven Mile Ridge
- G. Mass Excavation
- H. Section 9 Pit



MSB Information Technology Dept./GIS
9/23/2024

- Special Land Use District
- Interim Materials District
- Large Lot Single Family Residential Land Use District
- Residential Land Use District
- Single Family Residential Land Use District

This map is solely for informational purposes only. The Borough makes no express or implied warranties with respect to the character, function, or capabilities of the map or the suitability of the map for any particular purpose beyond those originally intended by the Borough. For information regarding the full disclaimer and policies related to acceptable uses of this map, please contact the Matanuska-Susitna Borough GIS Division at 907-861-7858