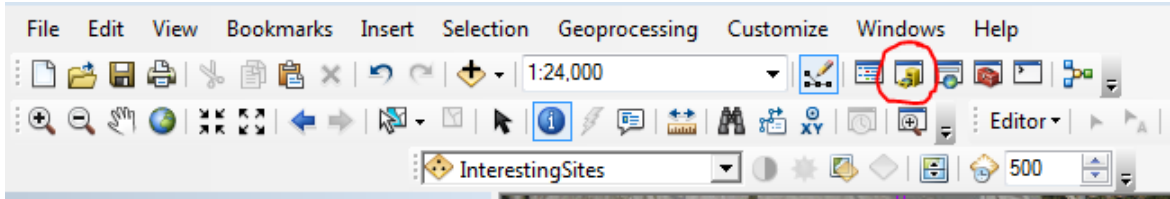
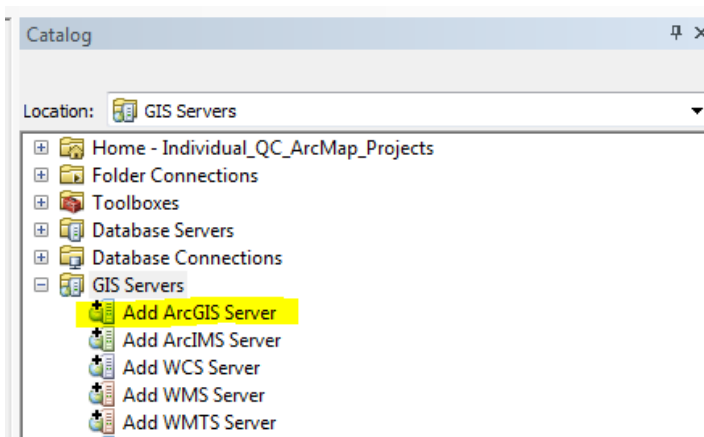


Loading Imagery Services in ArcMap

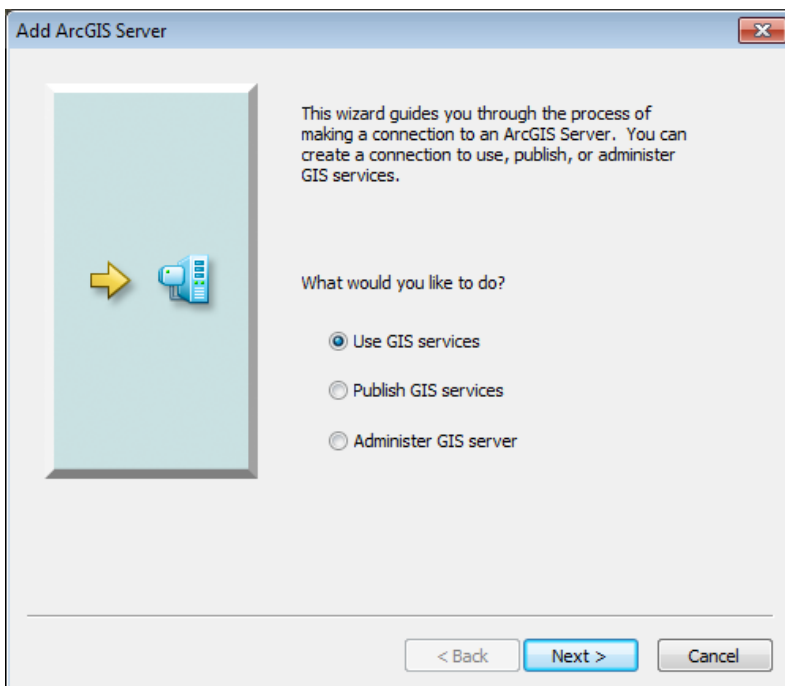
1. Open an ArcMap project.
2. Click on the ArcCatalog tool.



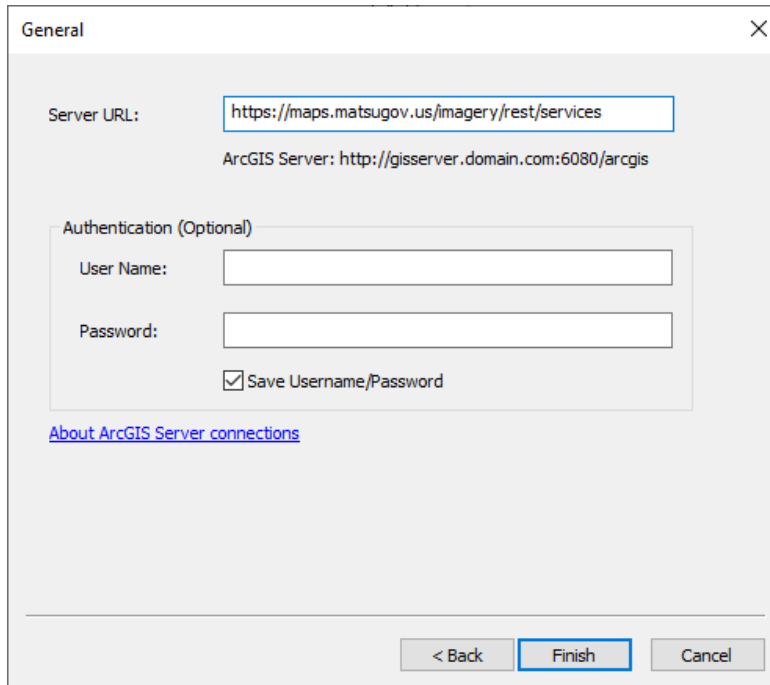
3. In ArcCatalog, double click Add ArcGIS Server.



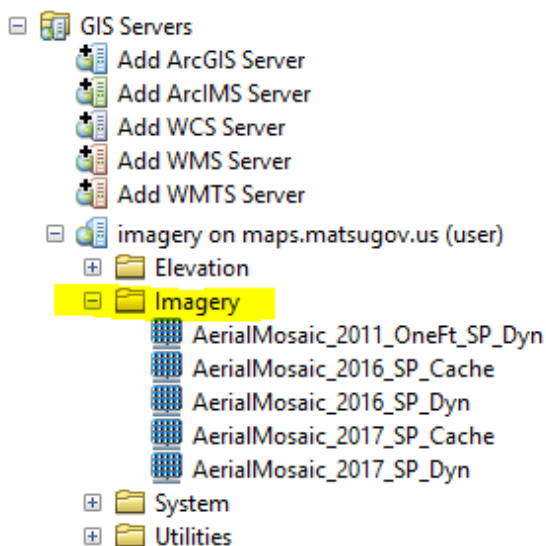
4. In the Add ArcGIS Server window, select Use GIS services, then click Next.



5. In the General window copy and paste in the following URL:
<https://maps.matsugov.us/imagery/rest/services> and click Finish.



6. In ArcCatalog, under GIS Servers, there is now a new connection called **imagery on maps.matsugov.us (user)**. Click on the plus signs to show the available data. Click once and hold, on the dataset of interest then drag and drop it into the map or Table of Contents.



7. The imagery should now show in your map document.
8. Other services in **imagery on maps.matsugov.us (user)** can be used as well, like the hillshades in the Elevation folder.