



FEMA



# What is Risk MAP?

**Risk Mapping, Assessment, and Planning (Risk MAP)** is a new Federal Emergency Management Agency (FEMA) program that provides communities with flood information and tools they can use to enhance their mitigation plans and better protect their citizens. Through more accurate flood maps, risk assessment tools, and outreach support, Risk MAP builds on Map Modernization and strengthens local ability to make informed decisions about reducing risk.

## The Risk MAP Vision

Through collaboration with State, Tribal, and local entities, Risk MAP will deliver quality data that increases public awareness and leads to action that reduces risk to life and property. Risk MAP will focus on products and services beyond the traditional Flood Insurance Rate Map (FIRM). FEMA will work with officials to help use flood risk data and tools to effectively communicate risk to citizens and enable communities to enhance their corresponding mitigation plans.

## Risk MAP Solution

Building on the Risk MAP Multi-Year Plan, FEMA has developed a Risk MAP Solution to achieve the program's vision. The Solution introduces new strategies and products designed to achieve the goals and objectives laid out in the vision. These strategies and products address project prioritization, elevation data acquisition, watershed study approach, engineering and mapping, risk assessment, mitigation planning support, and risk communications. The following sections provide the overall objective of each of these strategies.



### The Risk MAP Team

FEMA's ten Regional Offices implement Risk MAP at the local level through close collaboration with community officials.

FEMA Headquarters provides direction, policy, and guidance to enable consistent implementation nationwide.

State, regional, Tribal, and local communities can use enhanced hazard data to make more informed decisions regarding risk.

### FEMA's Risk MAP Multi-Year Plan

On March 16, 2009, Congress approved the Risk MAP Multi-Year Plan for fiscal years 2010 to 2014. This document outlines the goals, objectives, and strategies for Risk MAP and summarizes FEMA's strategic planning approach and stakeholder roles and responsibilities. For more information please visit [www.fema.gov/plan/prevent/fhm](http://www.fema.gov/plan/prevent/fhm)

### Vision

Risk MAP will deliver quality data that increases public awareness and leads to action that reduces risk to life and property

### Multi-Year Plan

### Risk MAP Program Measures

#### Goal 1: Data Gaps

Address gaps in flood hazard data

#### Goal 2: Awareness & Understanding

Measurably increase public's awareness & understanding

#### Goal 3: Mitigation Planning

Lead effective engagement in Mitigation Planning

#### Goal 4: Digital Platform

Provide an enhanced digital platform

#### Goal 5: Synergize Programs

Align Risk Analysis programs and develop synergies

# RiskMAP

Increasing Resilience Together

## Project Prioritization

Guides FEMA's investments in engineering, mapping, assessment, and planning support in order to achieve Risk MAP objectives

- Applies a quantitative approach to determine which communities FEMA will study

## Elevation Data Acquisition

Improves engineering data and supports risk assessment data development

- Elevation data is essential to the accuracy and reliability of flood hazard data
- Updated digital elevation data enables better risk assessments
- Detailed, digital elevation data supports innovative risk communication products

## Watershed Study Approach

Improves engineering credibility and opens the door to understanding risks in a more holistic, comprehensive way

- Encourages work across community boundaries and a more comprehensive understanding of flooding
- Allows for a better understanding of flood hazards as a result of more comprehensive assessments of stream and tributary relationships
- Provides a framework to evaluate flood risk, engineering need, elevation data acquisition availability and gaps, and availability of community contribution by watershed

## Engineering and Mapping

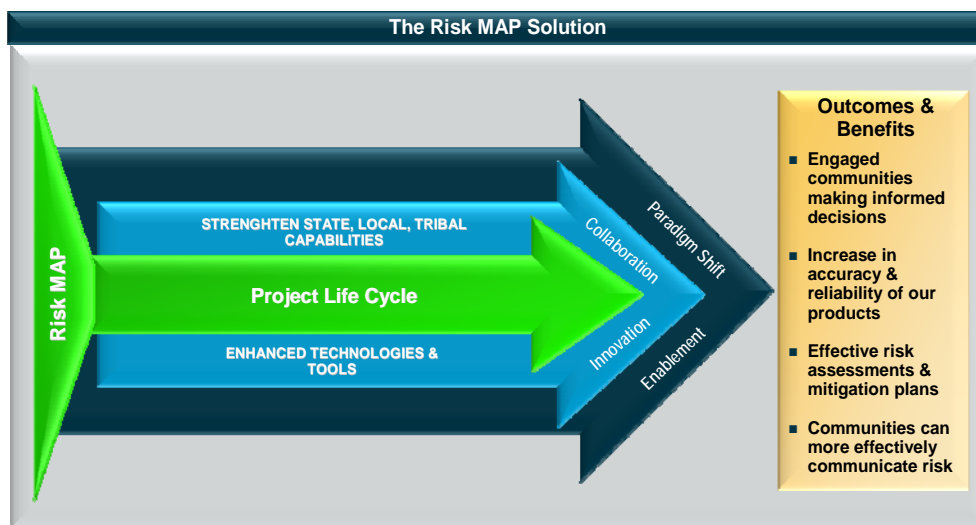
Identifies flood hazards, provides local floodplain management data, supports the National Flood Insurance Program (NFIP), and provides data for risk assessments and mitigation plans for flood hazards

- Includes the scientific collection, processing, and analysis of flood hazard data to provide communities with accurate flood maps and risk assessment products
- Engineering and mapping data provide the foundation for more effective risk communications through assessments and also enable effective mitigation at the local level
- Includes significant investments in the flood mapping of areas impacted by levees and coastal flood hazard

## Risk Assessment

Allows communities to make informed mitigation decisions by providing products and technologies that communicate and visualize risks

- Equips communities with the information and tools they need to develop effective mitigation plans
- Provides communities with flood risk information through a Flood Risk Report, Flood Risk Map, and Flood Risk



Database

## Mitigation Planning Support

Provides technical assistance, incentivizes risk reduction activities at the local level, and develops the programmatic infrastructure to monitor community efforts

- Enables communities to assess risks and identify actions to reduce vulnerability to those risks
- Enhances collaboration with and among local stakeholders
- Provides tools to improve communities' understanding of risk and facilitate mitigation planning and local risk reduction efforts
- Incentivizes local effective mitigation planning and risk reduction activities

## Risk Communications

Motivates citizens to make informed decisions regarding their risks and encourages communities to take the lead in protecting their constituents

- Enhances local capabilities to communicate effectively with constituents about risk
- Allows for an exchange of information about risk between FEMA and other stakeholders
- Provides customizable communications plans, key messages, and materials to communities
- Facilitates national and local collaboration through key partnerships

**RiskMAP**  
Increasing Resilience Together