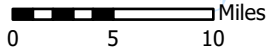
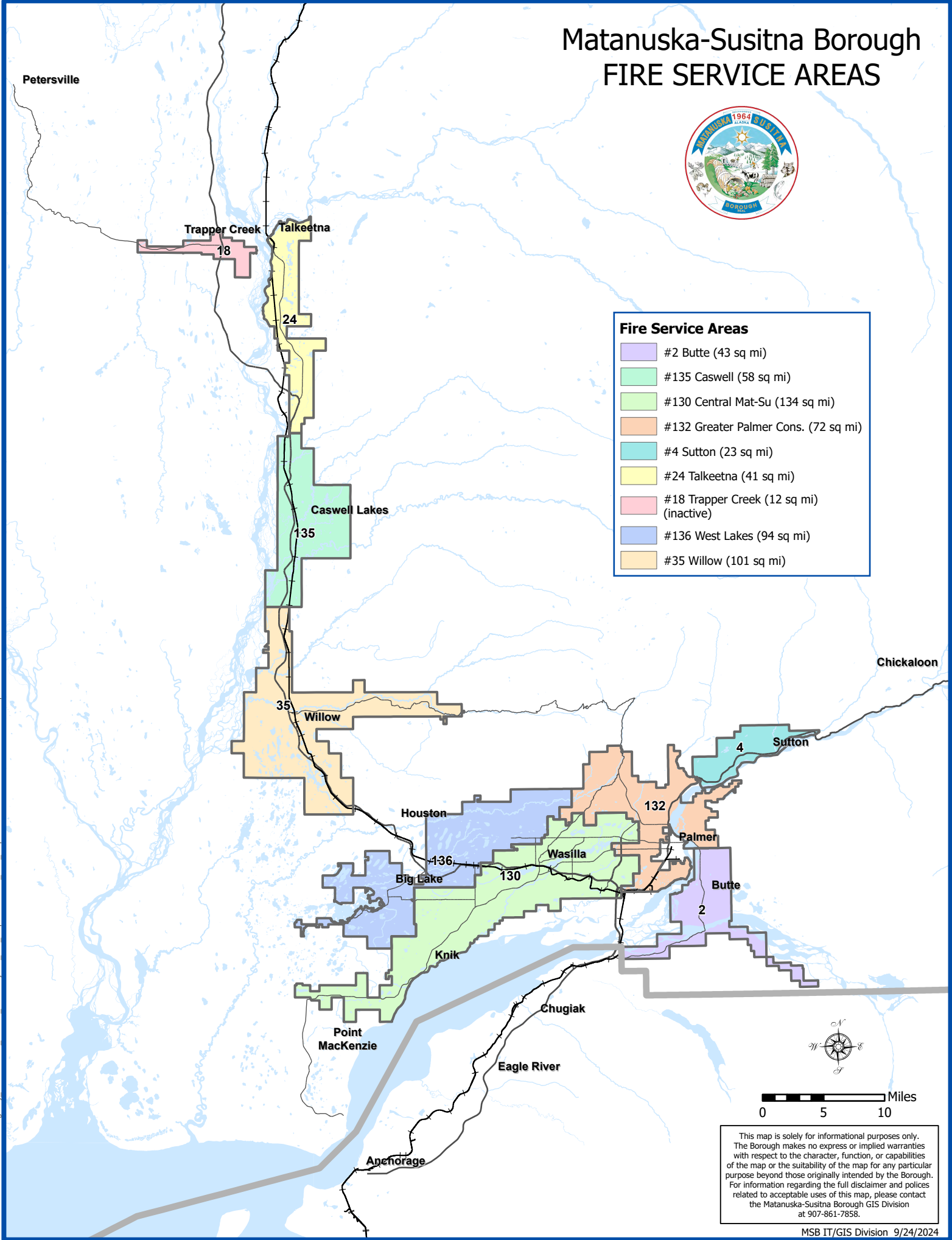


# Matanuska-Susitna Borough FIRE SERVICE AREAS



Fire Service Areas	
	#2 Butte (43 sq mi)
	#135 Caswell (58 sq mi)
	#130 Central Mat-Su (134 sq mi)
	#132 Greater Palmer Cons. (72 sq mi)
	#4 Sutton (23 sq mi)
	#24 Talkeetna (41 sq mi)
	#18 Trapper Creek (12 sq mi) (inactive)
	#136 West Lakes (94 sq mi)
	#35 Willow (101 sq mi)



This map is solely for informational purposes only. The Borough makes no express or implied warranties with respect to the character, function, or capabilities of the map or the suitability of the map for any particular purpose beyond those originally intended by the Borough. For information regarding the full disclaimer and policies related to acceptable uses of this map, please contact the Matanuska-Susitna Borough GIS Division at 907-861-7858.

Document Path: M:\Product\Emergency Services\Fire Service Area\Projects and Maps\FireServiceAreas\FireServiceAreas.aprx