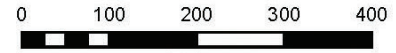
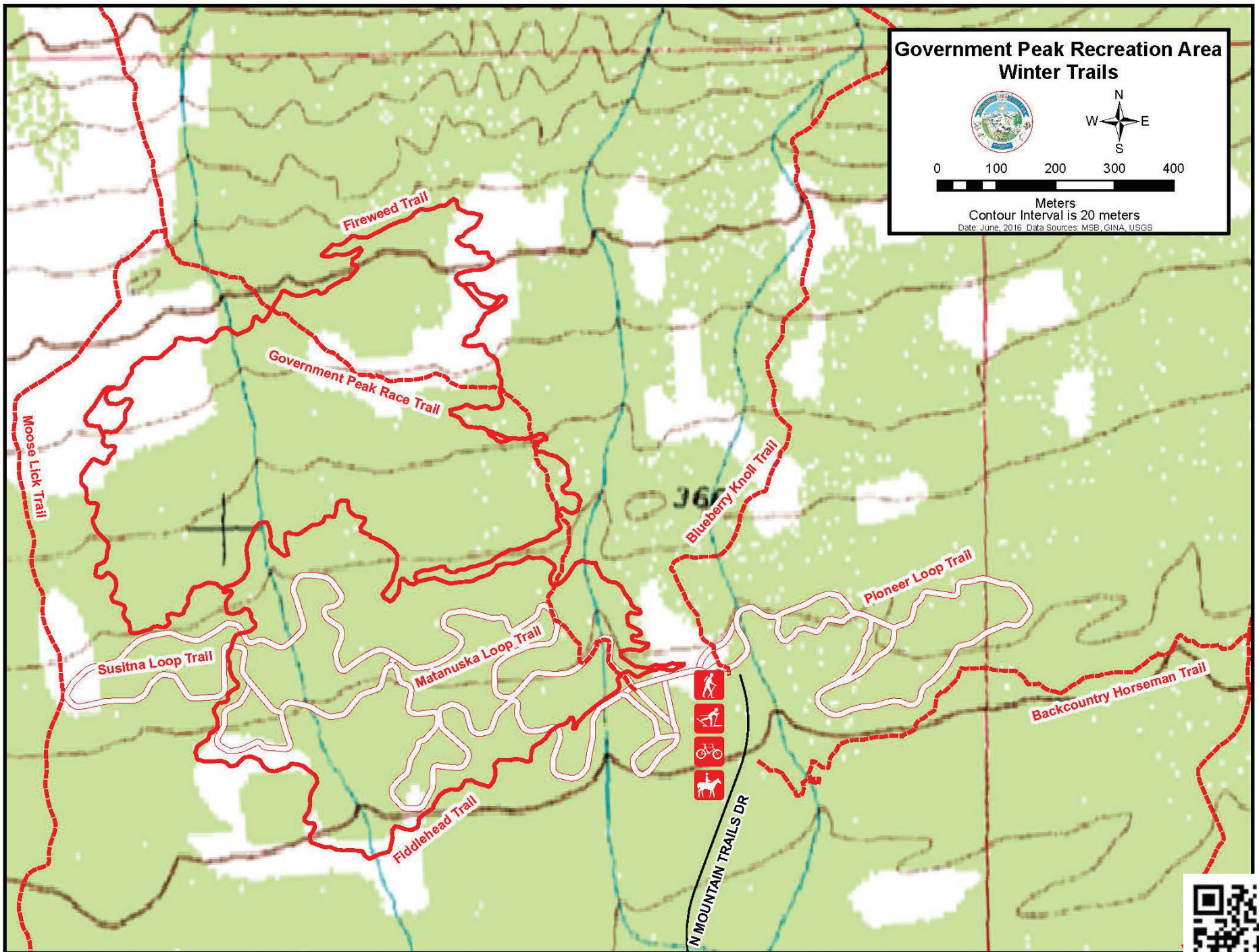


Government Peak Recreation Area Winter Trails



Meters
Contour Interval is 20 meters
Date: June, 2016 Data Sources: MSB, GINA, USGS



GOVERNMENT PEAK

Recreation Area - Winter

Parking Fee

\$5/day \$40/annual pass



GOVERNMENT PEAK

Recreation Area - Winter

AT A GLANCE

TRAILHEAD

Mountain Trails Drive

USE

Nordic skiing, snowshoeing, fat tire biking, skijoring, sledding

DISTANCE

9 miles combined

LEVEL

Easy to Moderate



Patty Sullivan, MSB

HOW TO GET THERE

From Palmer, take the Palmer-Fishhook Road toward Hatcher Pass. At mile 7, turn left onto Edgerton Parks Road. Drive one mile. Take a right on Mountain Trails Drive, the entrance.

TAKE NOTE

The gate at the bottom of Mountain Trails Drive opens at 8 am and closes at 8 pm. If locked in, the car will remain until morning. Keep dogs on a leash. Please clean up the trail after your pet.

DESCRIPTION

The Government Peak Recreation Area in winter offers groomed, lighted recreation trails for some 4.5 miles. The Matanuska Loop is 1.36 miles. The Susitna Loop is 1.29 miles. The Pioneer Loop is 1.32 miles and is the only winter trail that allows skijoring, fat bike riding, and snowshoeing. The night ski area is the first of its kind for the Matanuska-Susitna Borough. The Chugach Range is in bold view. The heated chalet has restrooms. The chalet is available for rent through the Matanuska Trails & Parks Foundation, 746-8757. In winter, the fatbike gains freedom on the two singletrack trails that travel for 4.2 miles over snow. The South Loop is for riders of all abilities. The North Loop offers terrain for more experienced riders. From a bike seat you can see clear views of Pioneer Peak and the Chugach Range. After working up hill, the downhill ride is an adventurous thrill. Two-way traffic is allowed on the trails. Runners and hikers share the path. Please be courteous and anticipate bikers descending the trail and pedestrians on the trail.



Patty Sullivan

MAT-SU BOROUGH TRAIL

